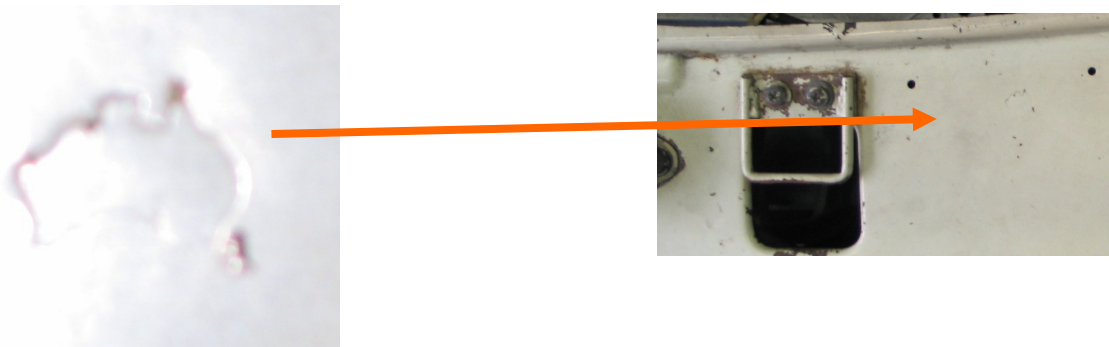


## Australian MGB 1970's mystery

Having worked on MG's especially MGB's for the last 30 years I have an interest in many of the odd fittings & stickers that I have found on various cars over the years.

One of the most interesting from an Australian production point of view is the stamping of a small map of Australia on the bonnet locking panel of some 70—72 MGB BL models. On original cars that have not had their bonnet lock support panels replaced or painted with a thick coat of 2 Pack colour you will often find a small map of Australia stamped into the panel to the left of the bonnet lock .



I have only ever found this stamping on YHN9 cars from Late 1970 onwards ,not just one or two but many vehicles. The only other place I have seen this stamp is on the engine of some Austin 1800's where the engine number is stamped.

Is there a reason , or did an industrious production body assembler just decide to leave a lasting reminder of his handy work ?

Have a look at your B and see if it is more Aussie than most.

Stuart Ratcliff