

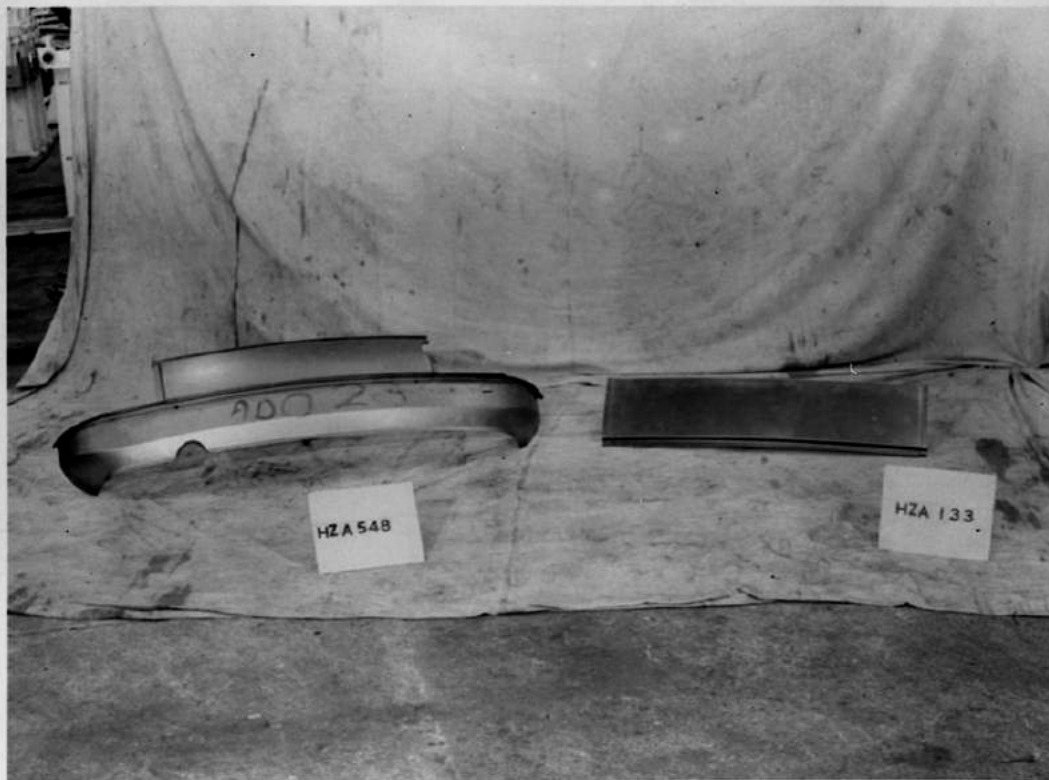


NUFFIELD (BMC) EXPORTS LIMITED

MGB CKD PARTS IDENTIFICATION

KDM 198

Reproduction



NO. 1
BODY PANEL IDENTIFICATION
KDM.198

HZA.548 PANEL BODY LOWER - REAR (11450/0212)
HZA.133 - PANEL - REAR DECKING (11450/0103)



NO. 2.
BODY PANEL IDENTIFICATION
KDM 198

HZA.411 - PANEL - REAR FENDER ASSY. R/H (31450/0050)
HZA.412 - PANEL - REAR FENDER ASSY. L/H (31450/0051)



NO.3.
BODY PANEL IDENTIFICATION

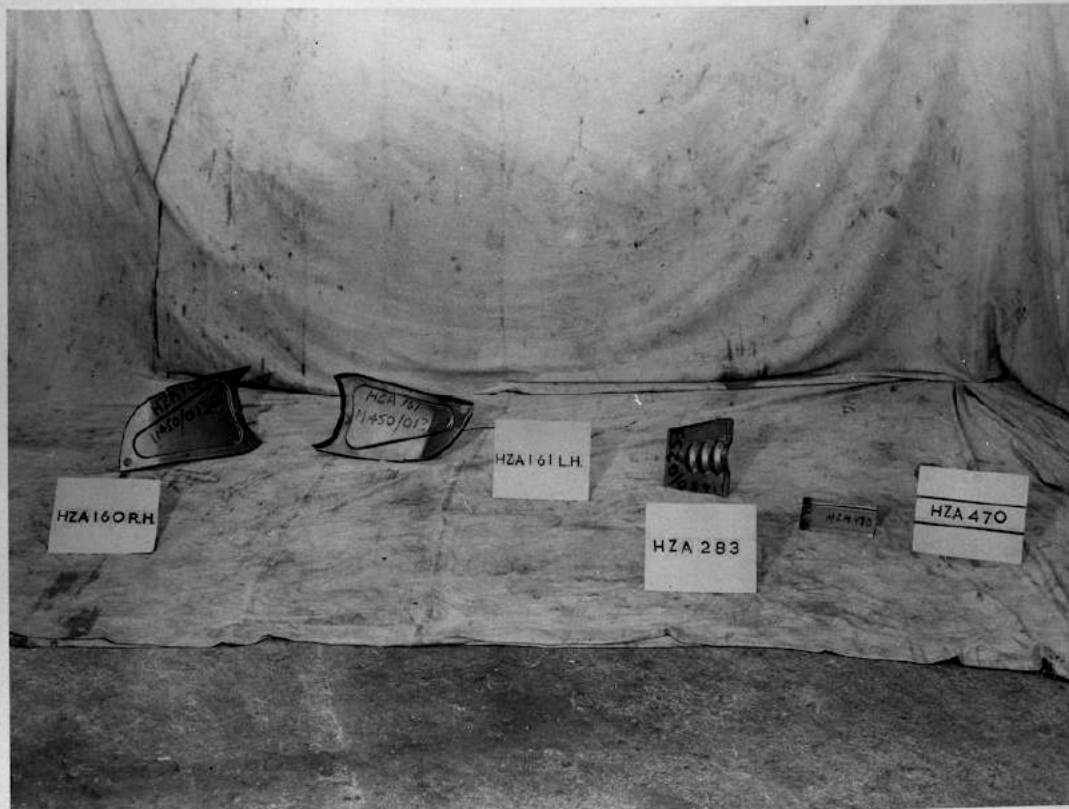
HZA.555 - UNDERFRAME - REAR END ASSEMBLY

KDM198



NO.4
BOOT PANEL IDENTIFICATION
KDM.198

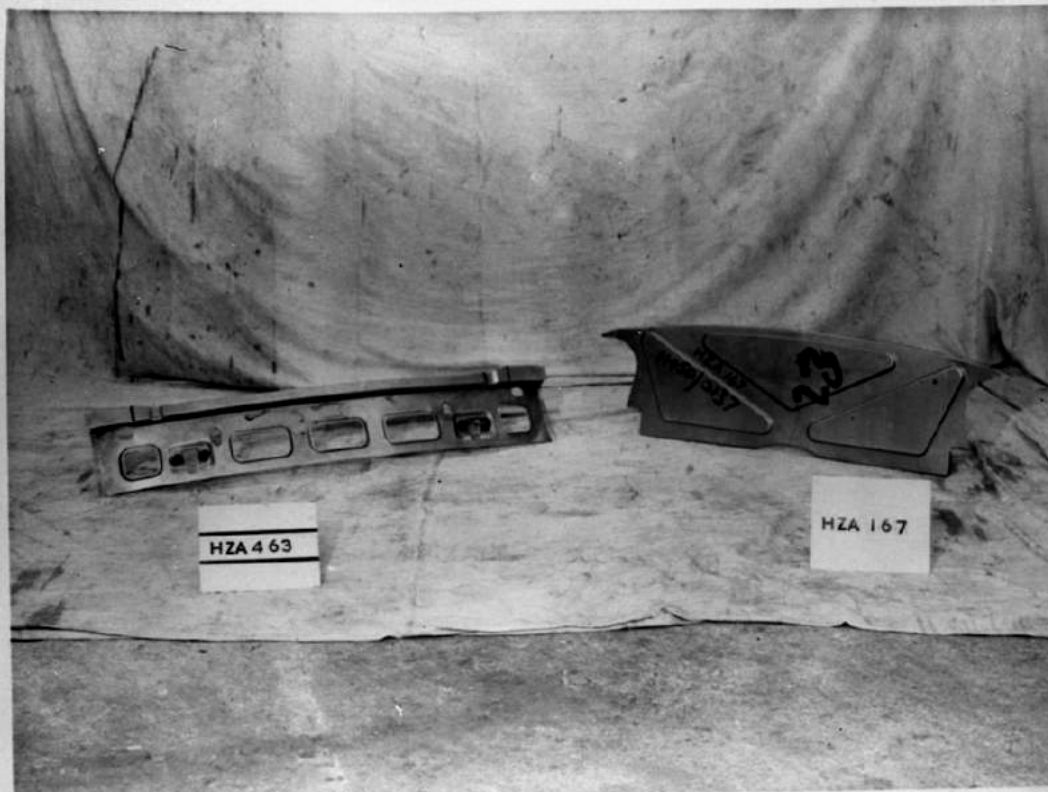
HZA.422. WHEELARCH - REAR ASSEMBLY R/H (31450/0094)
HZA.423. WHEELARCH - REAR ASSEMBLY L/H (31450/0095)



NO.5.
BODY PANEL IDENTIFICATION

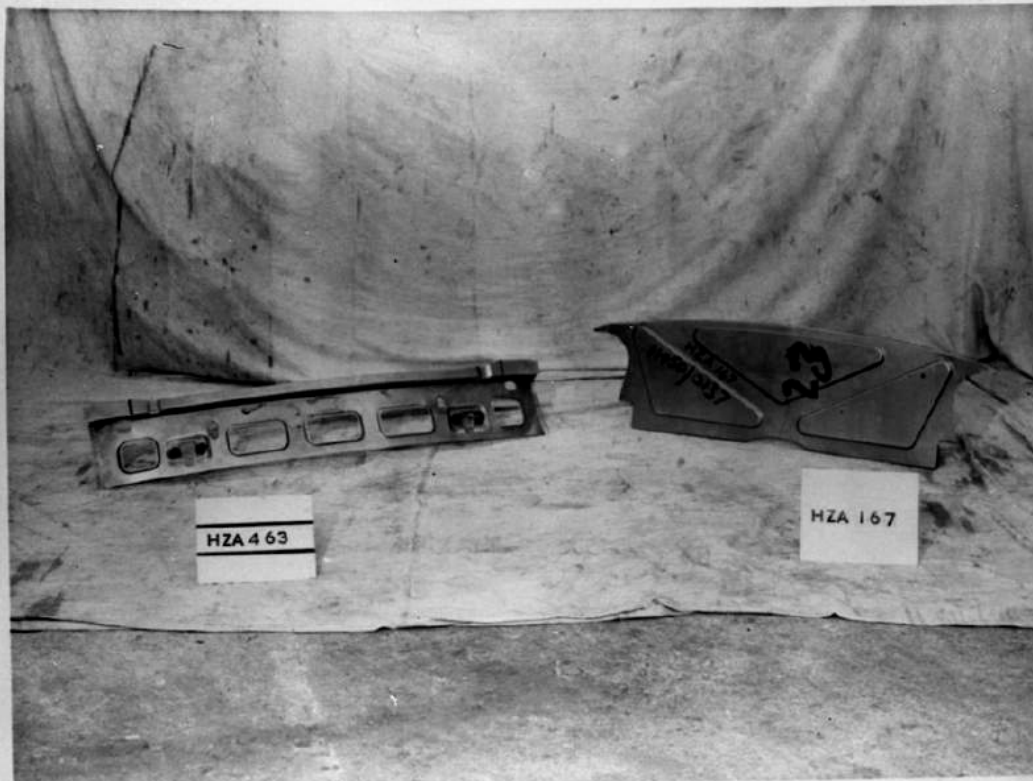
KDM198

HZA.160/1 PANEL - OUTER FLOOR - TRUNK R AND LH (11450/0130/1)
HZA.283 PLATE - BRACING - HEELBOARD (11450/253)
HZA.470 - PLATFORM - TRUNK LID STRIKER (31450/0140)



NO.6
BODY PANEL IDENTIFICATION
KDM.198

HZA.463- REINFORCEMENT - TRUNK OPENING - FRONT ASSY (31450/0133)
HZA.167- PANEL - BULKHEAD - REAR (11450/0137)



NO.6
BODY PANEL IDENTIFICATION
 KDM.198

HZA.463- REINFORCEMENT - TRUNK OPENING - FRONT ASSY (31450/0133)
 HZA.167- PANEL - BULKHEAD - REAR (11450/0137)



NO.8.
BODY PANEL IDENTIFICATION

HZA.558 PANEL MAIN FLOOR AND GEARBOX COVER ASSY (31450/0304)

KDM.198



NO.9

BODY PANEL IDENTIFICATION

HZA.556/7 PANEL - DASH SIDES ASSYS. R AND LH (31450/0302/3 R & LH)

KDM198



NO.10

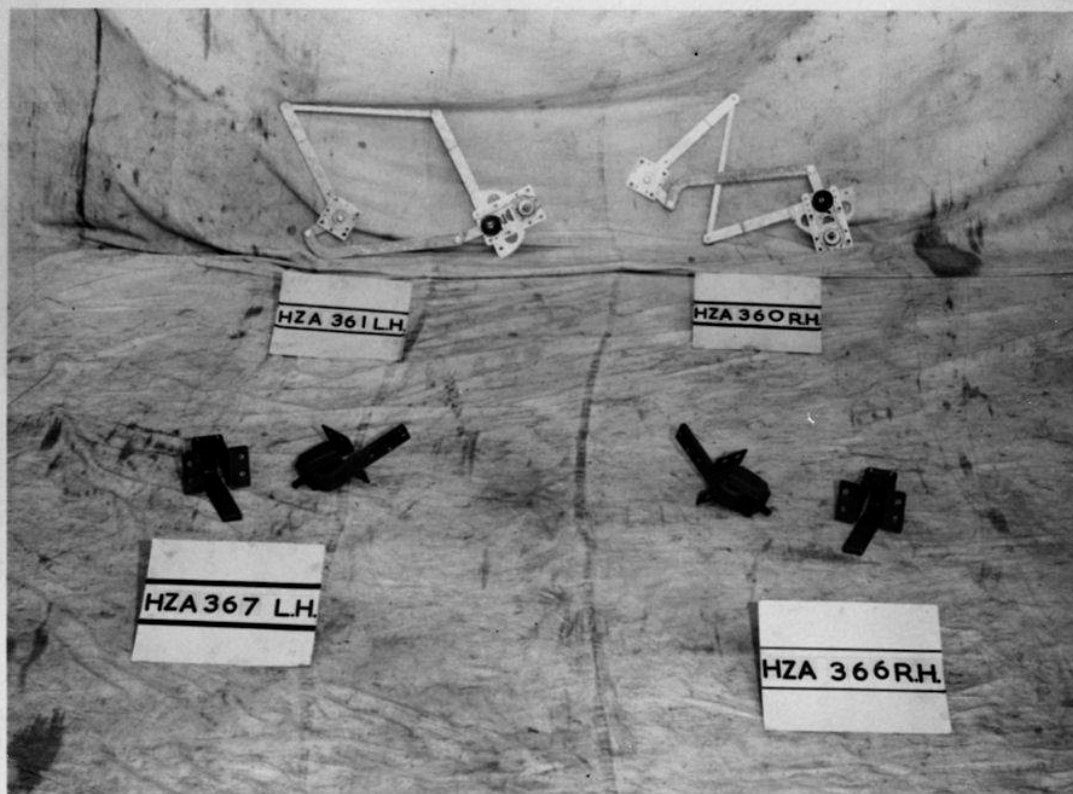
HZA.436/7 REAR QUARTER PANEL ASSYS R AND LH (31450/0106-7)

HZA.480 SHROUN PANEL ASSY (31450/0150)

BODY PANEL IDENTIFICATION

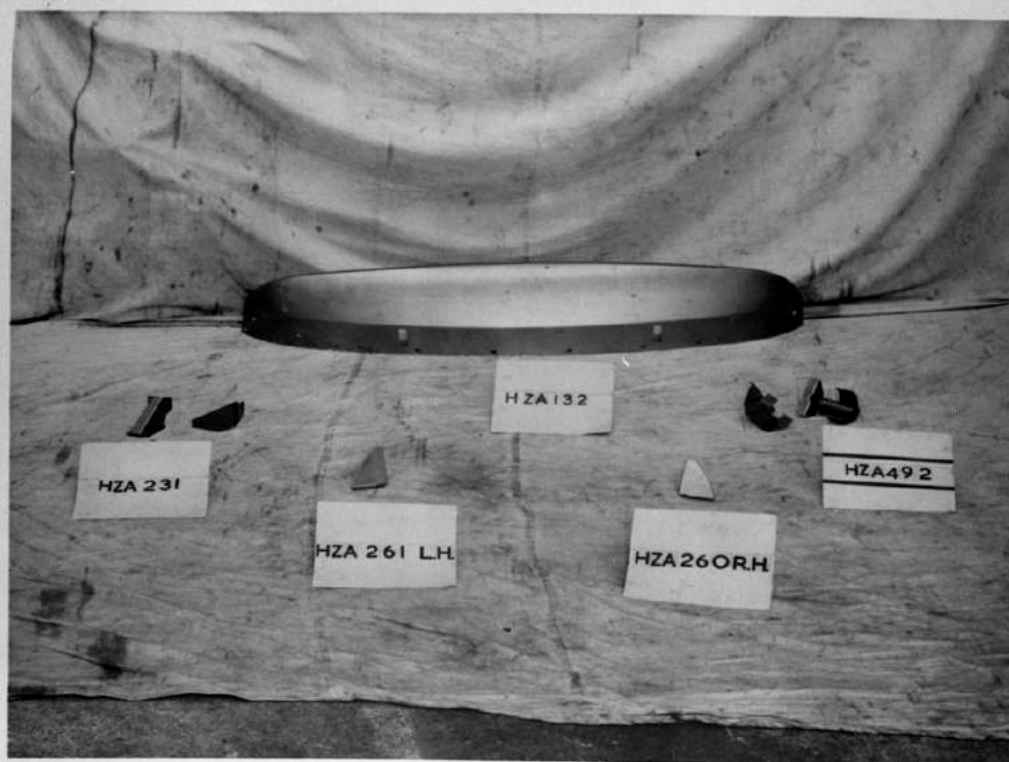
KDM 198

HZA.158/9 PANEL - WHEELARCH EXTENSION BULKHEAD R/LH (11450/0128-9)



NO. 11. HZA. 366/7 DOOR HINGE ASSY (21450/116-7) R AND LH.
BODY PANEL IDENTIFICATION HZA. 360/1 WINDOW REGULATOR - DOOR R AND LH (21450/0110-1)

KDM198



NO. 12. HZA. 132 PANEL FRONT FAIRING (11450/0102)
HZA. 231 REINF. JACKING SIDEMEMBER INNER (11450/0201)
HZA. 492 JACKING MOUNTING ASSY (31450/0162)
HZA. 260/1 FILLER PIECE SILL REAR R AND LH (11450/0230-1)

BODY PANEL IDENTIFICATION

KDM198

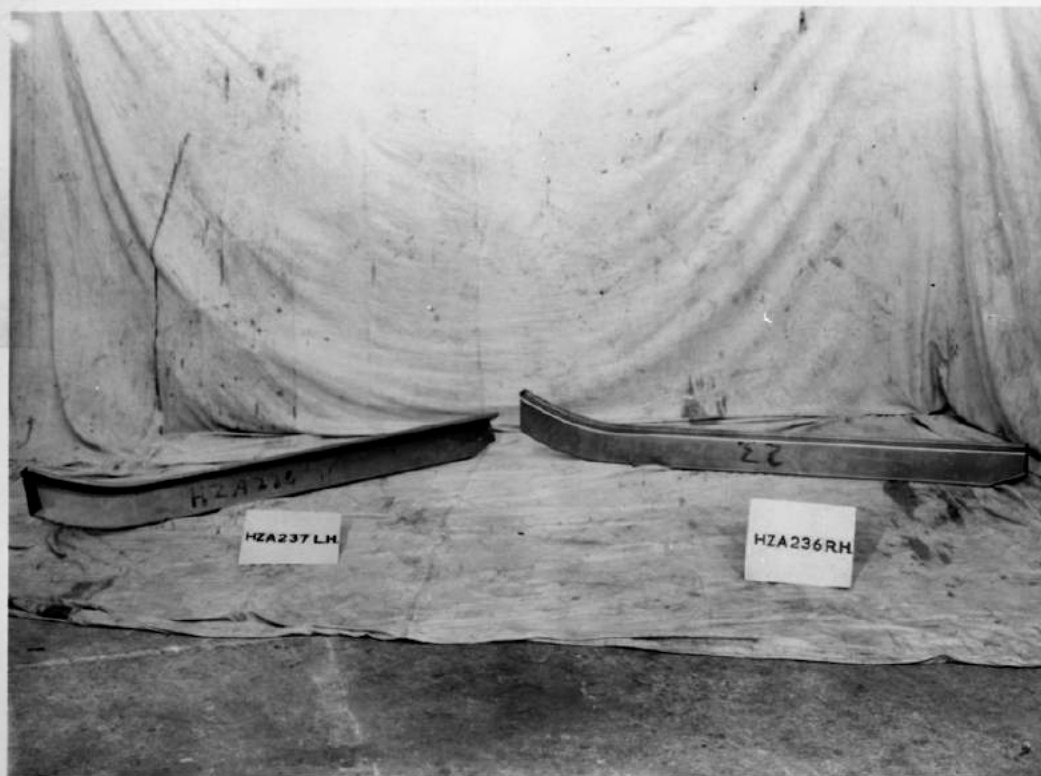


NO. 13.

HZA.188/9 PANEL - SILL CLOSING R AND LH (11450/0158/9)

BODY PANEL IDENTIFICATION

KDM199

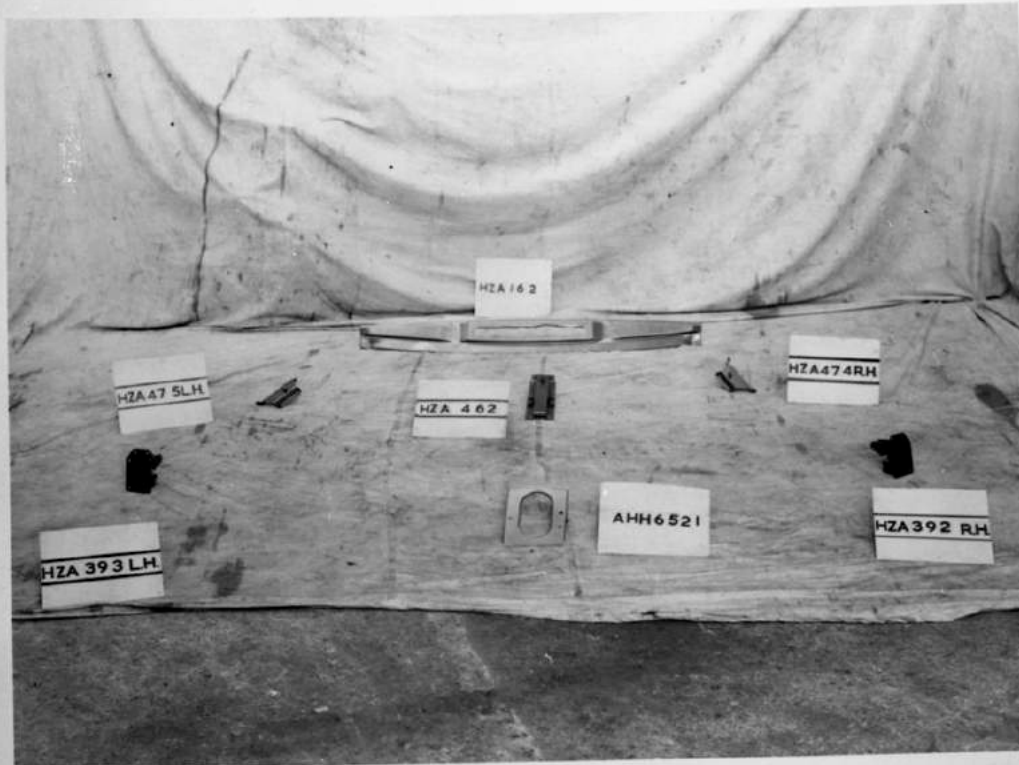


NO. 14.

HZA. 236/7 SIDEMEMBER - INNER R AND LH (11450/206-7)

BODY PANEL IDENTIFICATION

KDM198



NO.15

BODY PANEL IDENTIFICATION
KDM.198

HZA.162 REINF SHROUD PANEL (11450/0132)
HZA.474/5 STIFFENER - CORNER - SHROUD ASSY R & LH (31450/144/5)
HZA.462 REINF. CENTRE SHROUD ASSY. (31450/0132)
HZA.392/3 BRACKET FRONT ENGINE MOUNTING ASSY R&LH (31450/168/9)
AHH.6521 REGULATOR BRACKET.
HZA 162



NO.16

BODY PANEL IDENTIFICATION
KDM 198

AHH.6314/5 HINGE) TRUNK LID ASSY. R AND LH.
HZA.356 TRUNK LID LOCK STRIKER (21450/0106)
HZA.419 TRUNK LID ASSEMBLY (31450/0085)



NO. 17

BODY PANEL IDENTIFICATION

HZA.409-10 PANEL - FENDER FRONT ASSY. R & LH (31450/0048-49)

KDM193



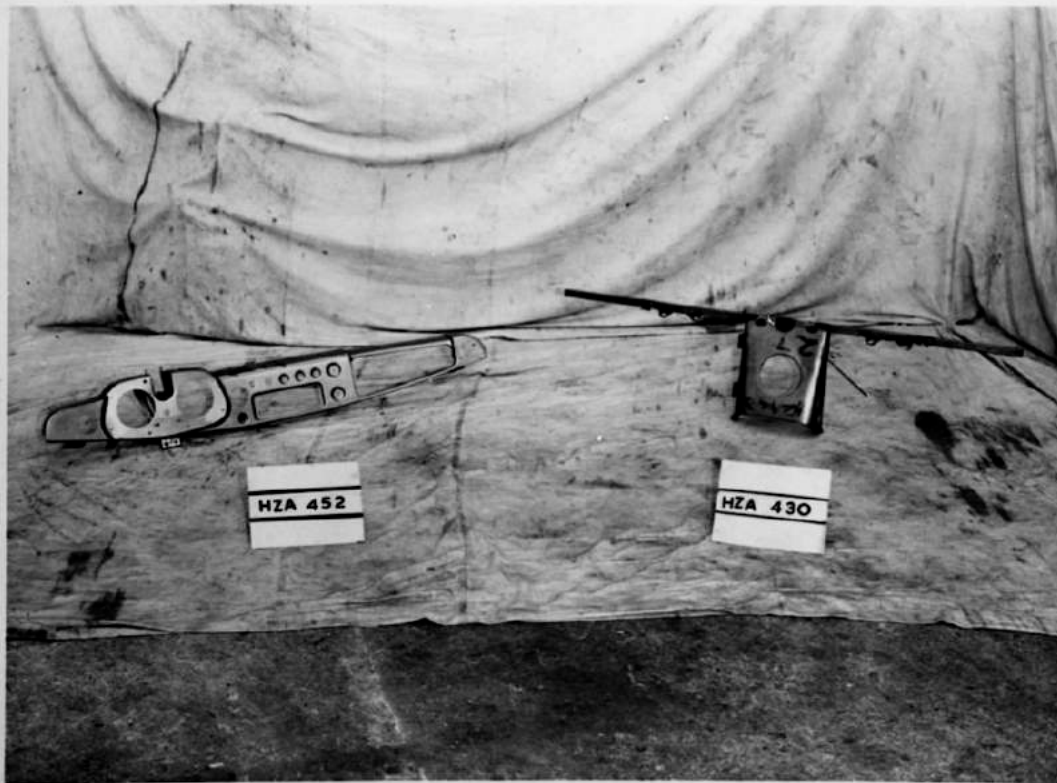
NO. 18

BODY PANEL IDENTIFICATION

KDM.198

HZA.401 - BONNET PANEL ASSY (31450/0048)

HZA.364 - BONNET HINGE ASSY (21450/0114)



NO.19
BODY PANEL IDENTIFICATION
 KIM.198

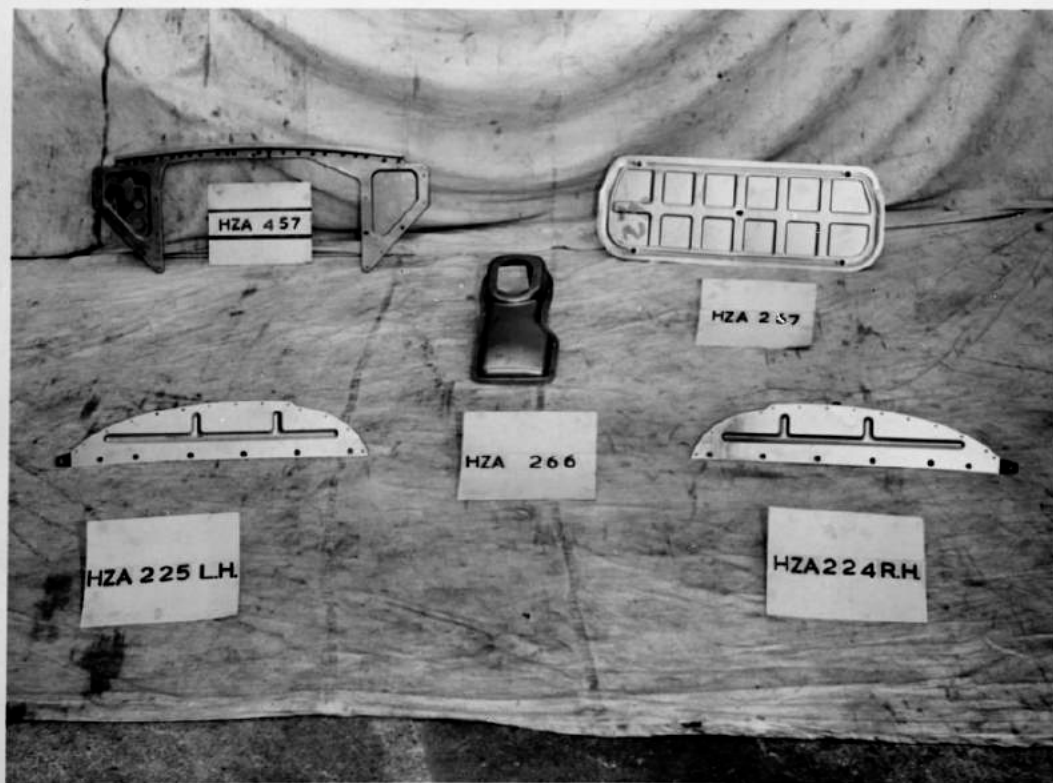
HZA.452 - PANEL - FACIA (31450/0122) RH OR HZA.453 (31450/0123) LHD
 HZA.430 - TUBE STIFFENER 'A' POST & PANEL REINF - G'BOX
 TO DASH ASSEMBLY (31450/0202)



NO.20
BODY PANEL IDENTIFICATION

HZA.407/8 DOOR COMPLETE ASSY. (31450/0034/5) R AND LH.

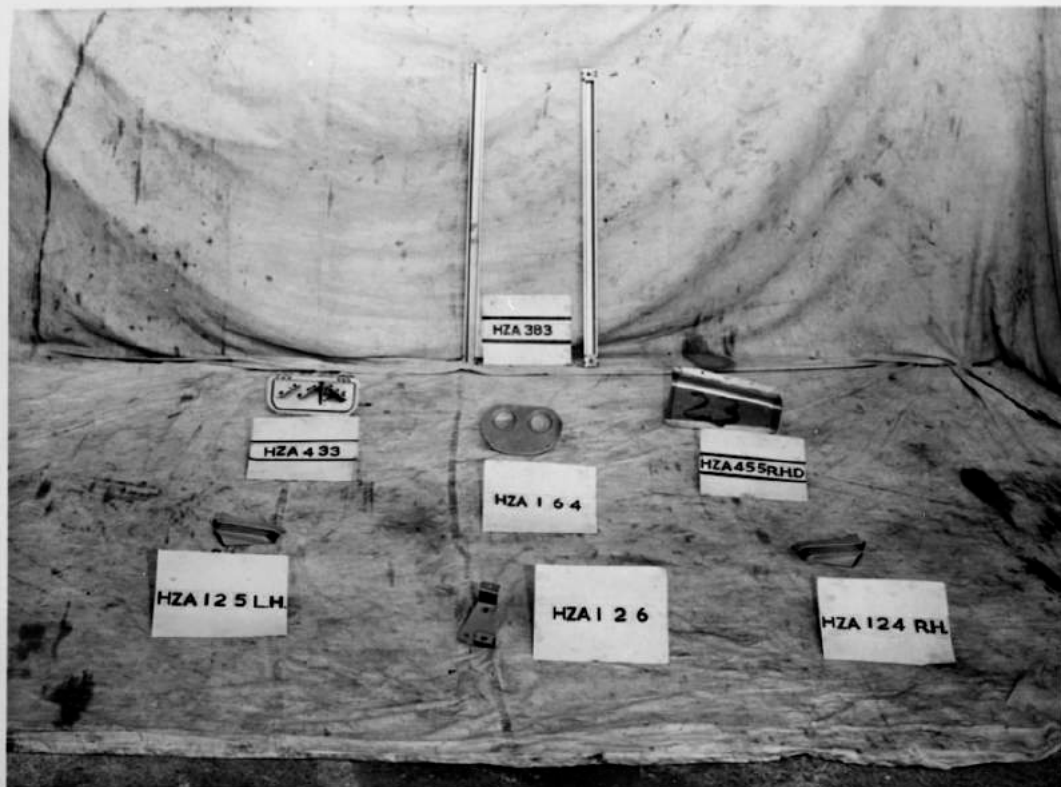
KDM.198



NO.21

BODY PANEL IDENTIFICATION
KDM.198

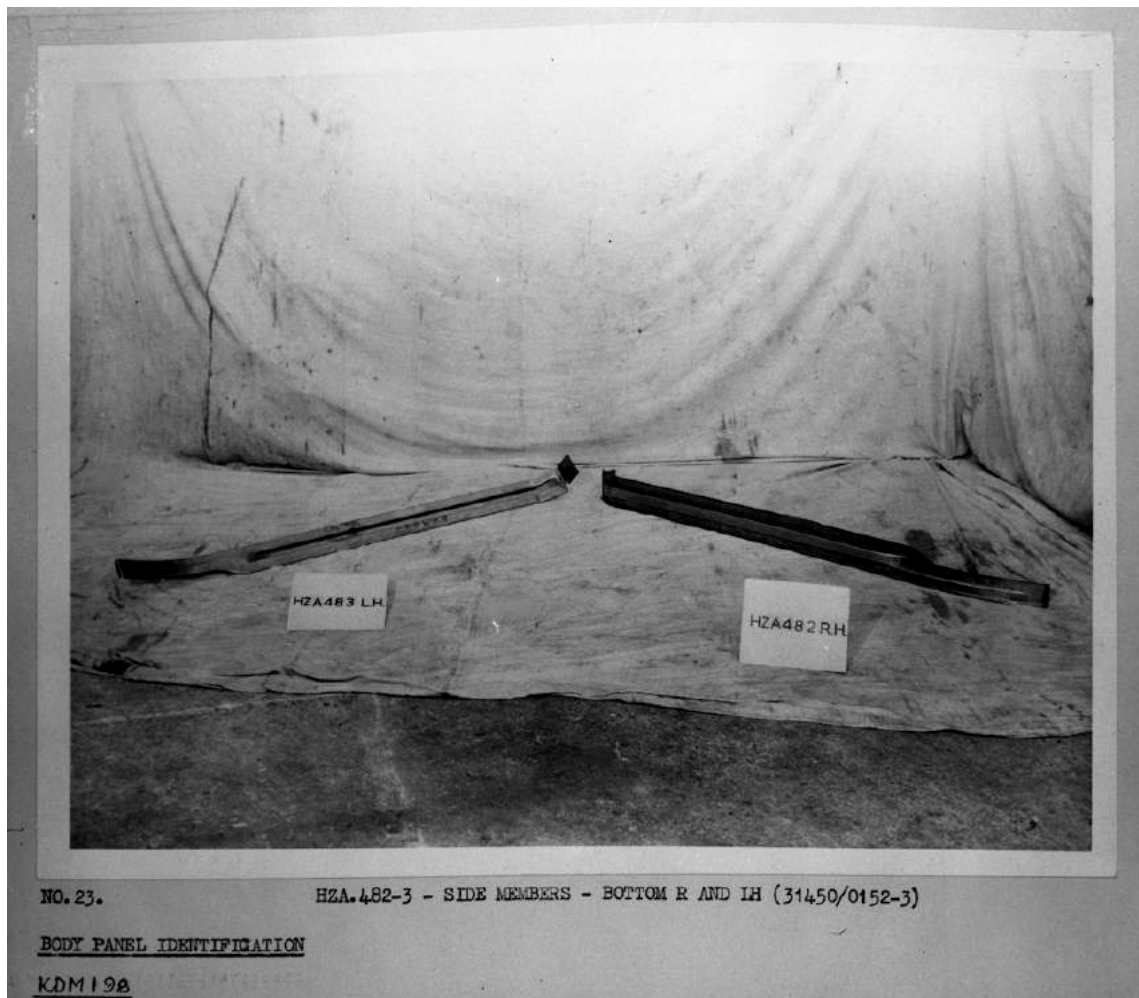
HZA.457 RADIATOR DIAPHRAGM ASSY (31450/0127)
HZA.224/5 PANEL Baffle - FRONT FENDER R & LH (11450/0194/5)
HZA.266 - COVER - REMOTE CONTROL - GEARBOX (11450/0236)
HZA.267 - COVER - BATTERY (11450/0237)



NO. 22.

BODY PANEL IDENTIFICATION
KDM 198

HZA.124-5 REINF. DASH SIDE TO 'A' POST TOP R AND LH (11450/0300-4)
HZA.126 BRACKET - WINDSCREEN WIPER MOTOR (11450/0302)
HZA.164 COVER PLATE - HEATER CONTROL ACCESS APT. (11450/0103)
HZA.433 DOOR FRESH AIR VENT ASSY (31450/0103)
HZA.454-5 GLOVE BOX LID ASSY. LHD AND RHD (31450/124-5)
HZA.383 LONGITUDINAL STIFFENER DOOR (31450/0171)



The part numbers shown may not agree with normal part numbers. These are CKD numbers allocated for CKD purposes by Nuffield (BMC) Exports.

This collection of information taken from original negatives of photographs taken by BMC Australia in 1966.

No copyright exists. Information can be freely used.